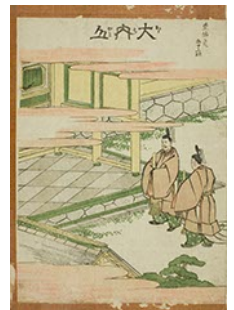
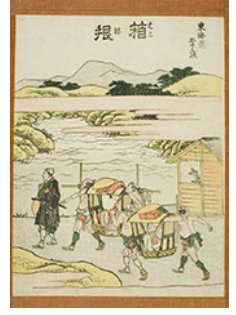
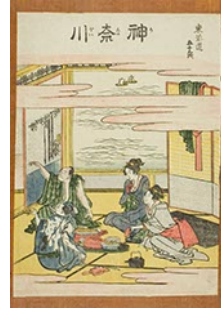
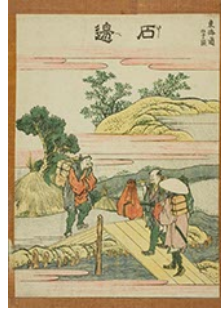
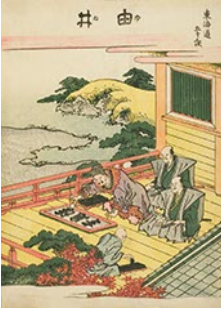
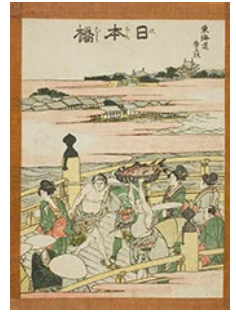
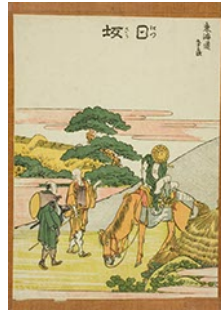
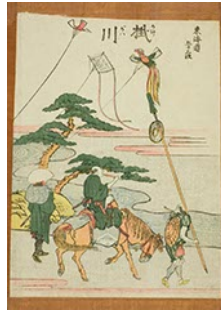
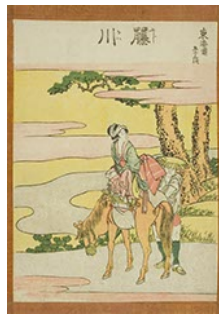
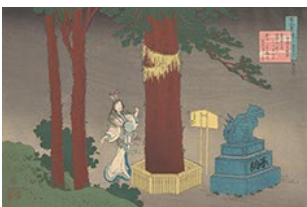


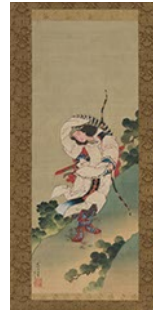
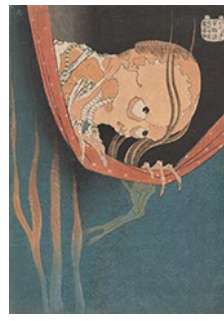
酒家百景 此圖百景圖會之
 月下百景 川 百馬百牛 川
 廣家百景 川 百倉百歌 川
 天橋五十年春三月發行
 分售所 永樂堂 京都
 分售所 西村 徳八
 分售所 西村 徳八
 分售所 西村 徳八

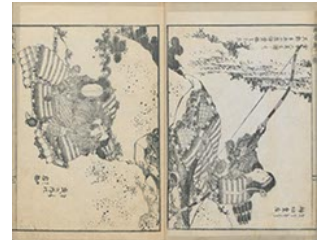
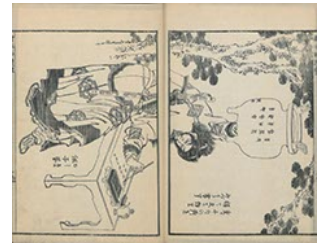


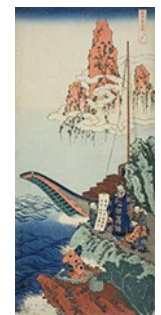
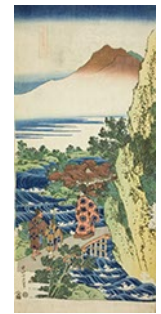
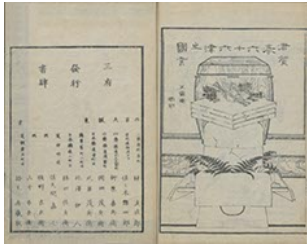




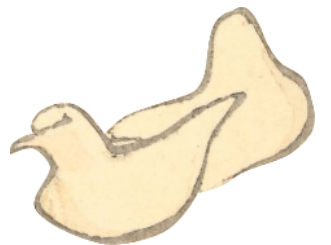
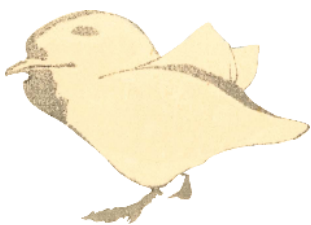
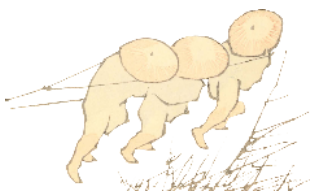


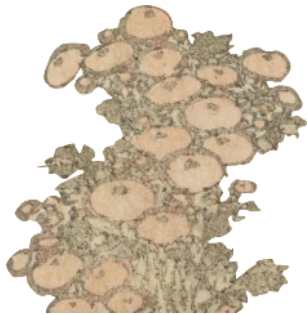


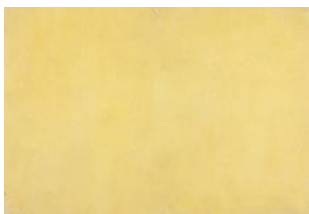
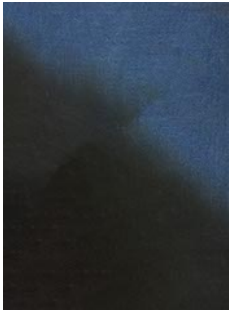






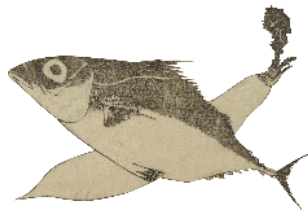








茶舟 高橋 一平

茶舟 高橋 一平

茶舟 高橋 一平




茶舟 高橋 一平




茶舟 高橋 一平


茶舟 高橋 一平




北奇改寫一系

北奇改寫一系

北奇改寫一系



十七光
廿年


泰永二画年正月
九十九人十午




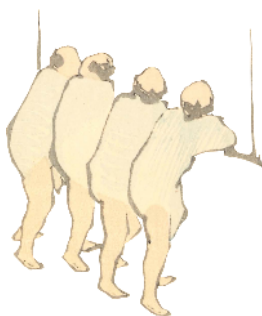
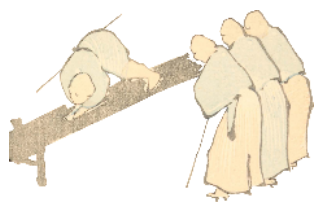
萬飾
夢平



志宗埋
小糸重



十七光
廿年





Vertical calligraphy in black ink, likely a signature or inscription.



Vertical calligraphy in black ink with two red square seals below it.

Vertical calligraphy in black ink, possibly a signature or inscription.

Vertical calligraphy in black ink with two red square seals below it.

Vertical calligraphy in black ink with two red square seals below it.



富嶽三十六景 凱風 快晴

富嶽三十六景 神奈川沖 浪裏

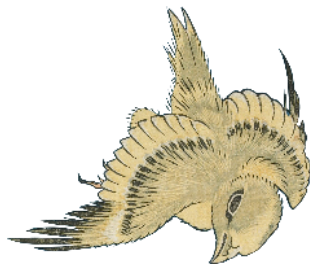
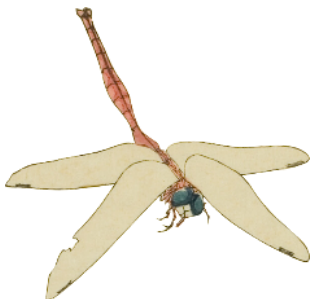
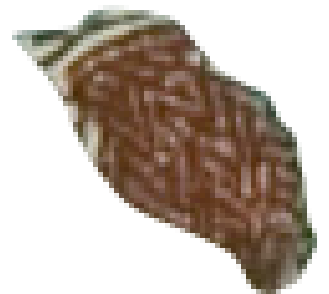
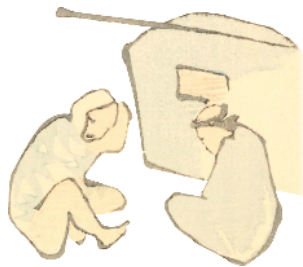


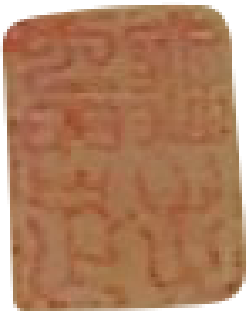
黎花 落月 酒微 酣柳絮 春雲睡正堪 天翁



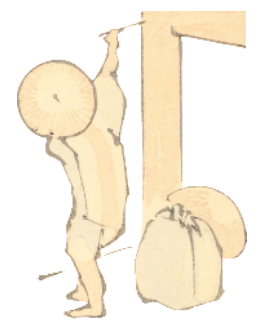
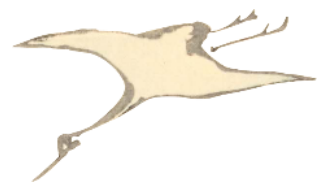
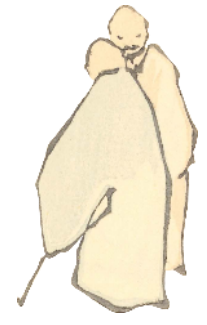
富嶽三十六景 尾列 不二見原

富嶽三十六景 山下 白雨



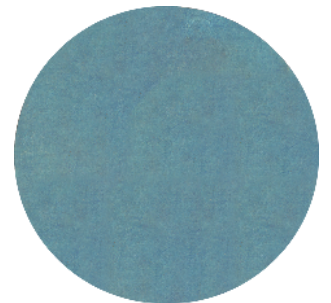
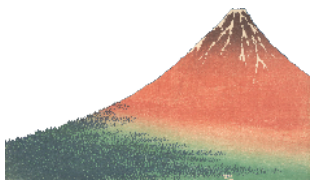
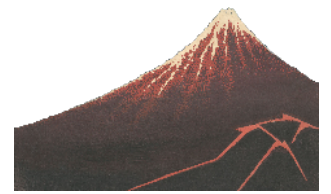


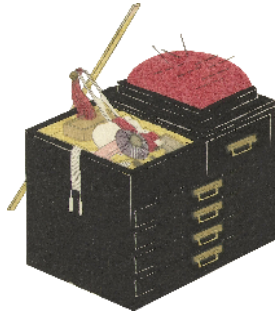
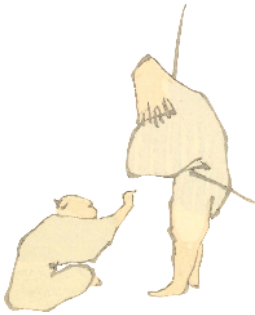
喜家理
沙画





Handwritten Japanese calligraphy in vertical style.





東
都
管
師
町
数
斗
等

